

*Chapter Six:*  
**Park Inventory**

# Chapter Six: Park Inventory

## Birchwood Park

Hilldale Avenue and Birchwood Drive adjacent to the TP&W Railroad

Acres 1.50  
 Tax Number 02-02-13-400-022  
 02-02-13-400-023  
 02-02-13-400-024  
 Acquired 1994 - leased

### Observations

#### Environmental

- The park is located within the 100 year flood plain.
- No wetlands are present in this park.
- The park is adjacent to Farm Creek to the south and a tributary to the west that includes a heavy invasive/native vegetation buffer with no access to the waterway.
- The park landscape is composed of turf and mature shade trees.

#### Safety

- The playground does not appear to be compliant with current playground safety guidelines and CPSC/ASTM standards. Proper play surfacing is not utilized beneath. Swing seats are not a recommended style and open "S" hooks create entanglement and impalement hazard.
- The park does not have security lighting.
- The park's street frontage allows for adequate surveillance.
- A park identification sign is present, however a park rules sign is absent.

#### Site Design

- The park has open areas for non-programmed use.
- Site furniture that can be found throughout the park include 2 benches, 1 trash receptacle, and 1 grill.
- The park has a dedicated picnic area with picnic tables and a grill underneath mature shade trees.
- The playground has adequate separation from the roadway.
- The playground includes 2 belt swings, no edge separation, and no play surfacing.
- Single family residential is immediately adjacent to the park. Not enough buffer is provided.
- A new city sidewalk has recently been constructed along the park's street frontage.
- The park is well maintained and free of litter.

#### Site Accessibility

- The park does not have any internal walkways, however the adjacent walkway north of the park is connected to the neighborhood walk system.
- There is no off-street parking provided at the park.
- The playground equipment does not appear to meet ADA accessibility requirements for play environments.

#### Park Recommendations

- Remove existing play equipment.
- Provide small scale new play equipment with safety surfacing and accessible pathway to street.
- Provide additional buffer planting near adjacent residence.
- Thin understory species along Farm Creek to allow visibility.
- Update benches with picnic area as dictated by new site development.
- Refine accent planting adjacent to sign.

Quantity	Year Built	
		Trails-Multi-Use (miles)
		Trails-Bicycle (miles)
		Trails-Nature(miles)
		Shelter/Pavilion
		Restrooms
		Play Equipment
1	1994	Swings
		Concessions
		Tennis
		Basketball
		Volleyball
		Baseball
		Softball
		Soccer
		Football
		Sledding
		Skating Rink
		Parking Lot
		Parking Spaces
		Picnic Tables
2		Park Benches
		Drinking Fountain
		ADA Accessible

Utilities available:

ELE	WATER	STORM	SAN	GAS	TEL
-----	-------	-------	-----	-----	-----



Park Identification Sign



Swings (2 belt)



Park Bench (1 of 2)



Aerial Photo of Birchwood Park



Swings (2 belt), Benches, and Open Space

# Candlewood Park

located along Candlewood Drive

Acres 2.70  
 Tax Number 02-02-23-211-021  
 Acquired 1994 - donated

## Observations

### Environmental

- The park is not located in a flood plain.
- No wetlands are present in this park.
- The park is adjacent to Farm Creek to the west that includes a heavy invasive/native vegetation buffer with no access to the waterway.
- The park landscape is composed of turf and mature shade trees with a forested area to the west.

### Safety

- The playground does not appear to be compliant with current playground safety guidelines and CPSC/ASTM standards. Proper play surfacing is not utilized beneath swings and slide. The playground is remotely located.
- The park does not have security lighting.
- The park's street frontage allows for adequate surveillance.
- A park identification sign is present, however a park rules sign is absent.

### Site Design

- The park has open areas for non-programmed use.
- Site furniture that can be found throughout the park include a shelter, 4 (damaged) benches, 1 trash receptacle, 4 picnic tables, and 1 grill.
- The park has a dedicated picnic area with picnic tables and a grill near the shelter.
- The playground has adequate separation from the roadway.
- The playground includes 2 belt swings, a slide, no edge separation, and no play surfacing.
- A poorly defined trail system is located within the forested area.
- A historic bridge is located near the southwest corner of the park.
- Hidden trail potentially not owned to the west.
- The park is well maintained and free of litter.

### Site Accessibility

- The park does not have any internal walkways and is not connected to the neighborhood walk system.
- An off-street gravel parking area is provided at the park and can accommodate approximately 20 cars.
- The playground equipment does not appear to meet ADA accessibility requirements for play environments.

### Park Recommendations

- Remove existing play equipment.
- Provide medium scale new play equipment with safety surfacing and accessible pathway to street. New location should be closer to the shelter
- Emphasize views from the park to the Cemetery Road Bridge (part of the National Historic Registry) adjacent to the park on Candlewood Road. Potential for overlook and interpretive signage in addition to brush clearing along tributary.
- Improve parking edge/lot

Quantity	Year Built	
		Trails-Multi-Use (miles)
		Trails-Bicycle (miles)
		Trails-Nature(miles)
1		Shelter/Pavilion
		Restrooms
1	1994	Play Equipment
1	1994	Swings
		Concessions
		Tennis
		Basketball
		Volleyball
		Baseball
		Softball
		Soccer
		Football
		Sledding
		Skating Rink
		Splash Pad
1	1994	Parking Lot
20		Parking Spaces
4		Picnic Tables
4		Park Benches
		Drinking Fountain
		ADA Accessible

- Upgrade trail to limestone screenings or add mulch to provide better delineation.
- Add wayfinding/interpretive signs to trail system.
- Improve open area for programmed field use.
- Verify land ownership to the west
- Consider hiking/challenge course activities
- Replace damaged benches with new benches to provided adequate seating options.

Utilities available:

ELE	WATER	STORM	SAN	GAS	TEL
-----	-------	-------	-----	-----	-----



Park Identification Sign



Slide



Shelter with picnic tables adjacent to parking lot



Aerial Photo of Candlewood Park



Open Space adjacent to shelter and parking lot

# Ganzhorn Park

located along Elm Street

Acres .07  
 Tax Number 02-02-14-110-011  
 Acquired 2018 - purchased

## Observations

### Environmental

- The park is not located in a flood plain.
- No wetlands are present in this park.
- The small park is currently undeveloped with no programs .
- The park landscape is composed of turf with mature woodlands along the north and west perimeters.

### Safety

- The park does not have security lighting.
- The park's street frontage allows for adequate surveillance.
- A park identification sign is not present.

### Site Design

- The park has a small open area for non-programmed use.

### Site Accessibility

- The park does not have any internal walkways but is connected to the neighborhood walk system along Elm Street.
- There is no off-street parking provided at the park.
- Access into park is provided by the public sidewalk along Elm Street.

Quantity	Year Built	
		Trails-Multi-Use (miles)
		Trails-Bicycle (miles)
		Trails-Nature(miles)
		Shelter/Pavilion
		Restrooms
		Play Equipment
		Swings
		Concessions
		Tennis
		Basketball
		Volleyball
		Baseball
		Softball
		Soccer
		Football
		Sledding
		Splash Pad
		Skating Rink
		Parking Lot
		Parking Spaces
		Picnic Tables
		Park Benches
		Drinking Fountain
		ADA Accessible

Utilities available:

ELE	WATER	STORM	SAN	GAS	TEL
-----	-------	-------	-----	-----	-----



*Park Edge*



*Open Space*



*Mature Trees*



*Aerial Photo of Ganzhorn Park*



*Adjacent Property*

# Grant Park

located along Grant Street

Acres 1.00  
 Tax Number 02-02-20-402-018  
 Acquired information not available

## Observations

### Environmental

- The park is not located in a flood plain.
- No wetlands are present in this park.
- The park includes a natural area with a drainage swale and mature vegetation that collects water from adjacent properties with limited access.
- Intended community use of this park is located towards the upper half.
- The park landscape is composed of turf and mature shade trees.

### Safety

- The playground appears to be compliant with current playground safety guidelines and CPSC/ASTM standards.
- The park does not have security lighting.
- The park's street frontage allows for adequate surveillance.
- A new park identification sign is present, however a park rules sign is absent.

### Site Design

- The park has open areas for non-programmed use.
- Site furniture that can be found throughout the park include 1 trash receptacle.
- The playground has adequate separation from the roadway.
- The playground includes a 5-12 play structure, 2 belt/2 tot swings, plastic edge separation, and engineered wood fiber play surfacing. The playground edging is broken in several places and the play surfacing needs replenishment.
- A half basketball court with 1 new post/net is located next to the playground. The basketball court has several cracks/divots present and does not have any visible striping.
- The park is well maintained and free of litter.

### Site Accessibility

- The park does not have any internal walkways and the neighborhood does not have a sidewalk system.
- There is no off-street parking provided at the park.
- The playground equipment appears to meet ADA accessibility requirements for play environments.

### Park Recommendations

- Repair/replace playground edging.
- Provide gathering area/seating adjacent to play area/basketball court.
- Provide an accessible route to each amenity.
- Re-surface and stripe the basketball court.
- Refine accent planting around and adjacent to sign.

Quantity	Year Built	
		Trails-Multi-Use (miles)
		Trails-Bicycle (miles)
		Trails-Nature(miles)
		Shelter/Pavilion
		Restrooms
1		Play Equipment
1		Swings
		Concessions
		Tennis
0.5		Basketball
		Volleyball
		Baseball
		Softball
		Soccer
		Football
		Sledding
		Skating Rink
		Splash Pad
		Parking Lot
		Parking Spaces
		Picnic Tables
		Park Benches
		Drinking Fountain
		ADA Accessible

Utilities available:

ELE	WATER	STORM	SAN	GAS	TEL
-----	-------	-------	-----	-----	-----





Park Identification Sign



5-12 Play Structure and Swings (2 belt/2 tot)



Half Basketball Court



Aerial Photo of Grant Park



Swings (2 belt/2 tot) and street frontage

# Harry LaHood Park

located along Agnes Street, Kingsbury Road, and Grandyle Drive

Acres 5.00

Tax Number 02-02-15-400-018

Acquired information not available

## Observations

### Environmental

- The park is not located in a flood plain.
- No wetlands are present in this park.
- The park is within a newly developed residential area.
- The park landscape is composed of turf and young shade trees, however it is in need of shade.
- Active young neighborhood surrounding.

### Safety

- The playground appears to be compliant with current playground safety guidelines and CPSC/ASTM standards.
- The park does not have security lighting.
- The park's street frontage allows for adequate surveillance.
- The park offers off-street parallel parking
- A newer park identification sign and a rules signs are present near the splash pad, both shelters, and at the full basketball court, however a park rules sign is absent near the playground.

### Site Design

- The park has open areas for non-programmed use.
- Site furniture that can be found throughout the park include 2 shelters, a drinking fountain, 7 benches, 6 trash receptacles, 7 picnic tables, a ribbon bike rack, and a "little free library" box.
- The playground has adequate separation from the roadway.
- The playground includes a 5-12 play structure, 2 belt/2 tot swings, concrete edge separation, and engineered wood fiber play surfacing.
- A splash pad with appropriate surfacing and future expansion capability is present, however water use is costly.
- A permanent restroom with men's and women's rooms is present with a storage/maintenance room located on the reverse side of the enclosure.
- The park is well maintained and free of litter.

### Site Accessibility

- The park has internal walkways and is connected to the neighborhood walk system.
- Off-street parallel parking is provided at the park along Grandyle Drive and Agnes Street.

### Park Recommendations

- Add landscape layers.
- Add rules and regulations sign to 5-12 year old play structure.
- Consider adding more spray events/balanced with lower water use.
- Consider splash pad water recapture system for irrigation.

Quantity	Year Built	
		Trails-Multi-Use (miles)
		Trails-Bicycle (miles)
		Trails-Nature(miles)
2		Shelter/Pavilion
X		Restrooms
1		Play Equipment
1		Swings
		Concessions
		Tennis
1		Basketball
		Volleyball
		Baseball
		Softball
		Soccer
		Football
		Sledding
1		Splash Pad
		Skating Rink
		Parking Lot
30		Parking Spaces
7		Picnic Tables
7		Park Benches
1		Drinking Fountain
1		ADA Accessible

Utilities available:

ELE	WATER	STORM	SAN	GAS	TEL
-----	-------	-------	-----	-----	-----



Park Identification Sign



Splash Pad



Full Basketball Court



Aerial Photo of Harry LaHood Park



Permanent Restroom, Shelter, and 5-12 Play Structure

# Meadow Valley Park

located along Legion Street

Acres 10.00 park/80.00 natural area  
 Tax Number 02-02-21-300-007  
 02-02-28-100-001  
 Acquired information not available

## Observations

### Environmental

- The park is not located in a flood plain.
- No wetlands are present in this park.
- The park landscape is composed of turf and mature shade trees with a forested area/ravine centrally located within the park that separates the west and east public access areas.
- A tree nursery is located on the east side of the park.

### Safety

- The park only has security lighting within the parking lot.
- The park's street frontage allows for adequate surveillance of upper areas.
- Two park identification signs are present (one at the park's east portion, one at the west portion), however a park rules sign is absent at both locations.

### Site Design

- The park has open areas for non-programmed use.
- Site furniture that can be found throughout the park includes 3 shelters, benches, trash receptacles, picnic tables, and grills.
- The playground has adequate separation from the roadway.
- The playground in this park consists of a nature themed 5-12 year old play structure and two swings with engineered wood fiber play surfacing below with concrete edge separation.
- A mown trail system is located within the forested area with wayfinding signage at entrance points and markers along the trail system.
- An enclosed dog park with secured entry points is located on the west portion of the park, adjacent to the parking lot and shelter.

### Site Accessibility

- The park does not have any internal walkways and the neighborhood does not have a walk system.
- Off-street parking is provided at the park. The west gravel parking area can accommodate approximately 30 cars. The east gravel parking area can accommodate approximately 20 cars.
- The playground equipment appears to meet ADA accessibility requirements for play environments with accessible routes provided to the nearby picnic shelter, parking lot, and dog park.

### Park Recommendations

- Profile park as premiere natural area.
- Convert some open lawn areas into native planting.
- Add accessible routes from parking to east picnic areas and trail system.
- Consider a challenge course.
- Strengthen parking lot edge, consider paving.
- Continue to manage/control land with prescriptive burning, selective clearing, etc.
- Promote ecosystem exploration.

Quantity	Year Built	
		Trails-Multi-Use (miles)
		Trails-Bicycle (miles)
2.25		Trails-Nature(miles)
3		Shelter/Pavilion
		Restrooms
1		Play Equipment
2		Swings
		Concessions
		Tennis
		Basketball
1		Volleyball
		Baseball
		Softball
		Soccer
		Football
		Sledding
		Splash Pad
		Skating Rink
2		Parking Lot
30/20		Parking Spaces
20		Picnic Tables
4		Park Benches
		Drinking Fountain
1		ADA Accessible

Utilities available:

ELE	WATER	STORM	SAN	GAS	TEL
-----	-------	-------	-----	-----	-----



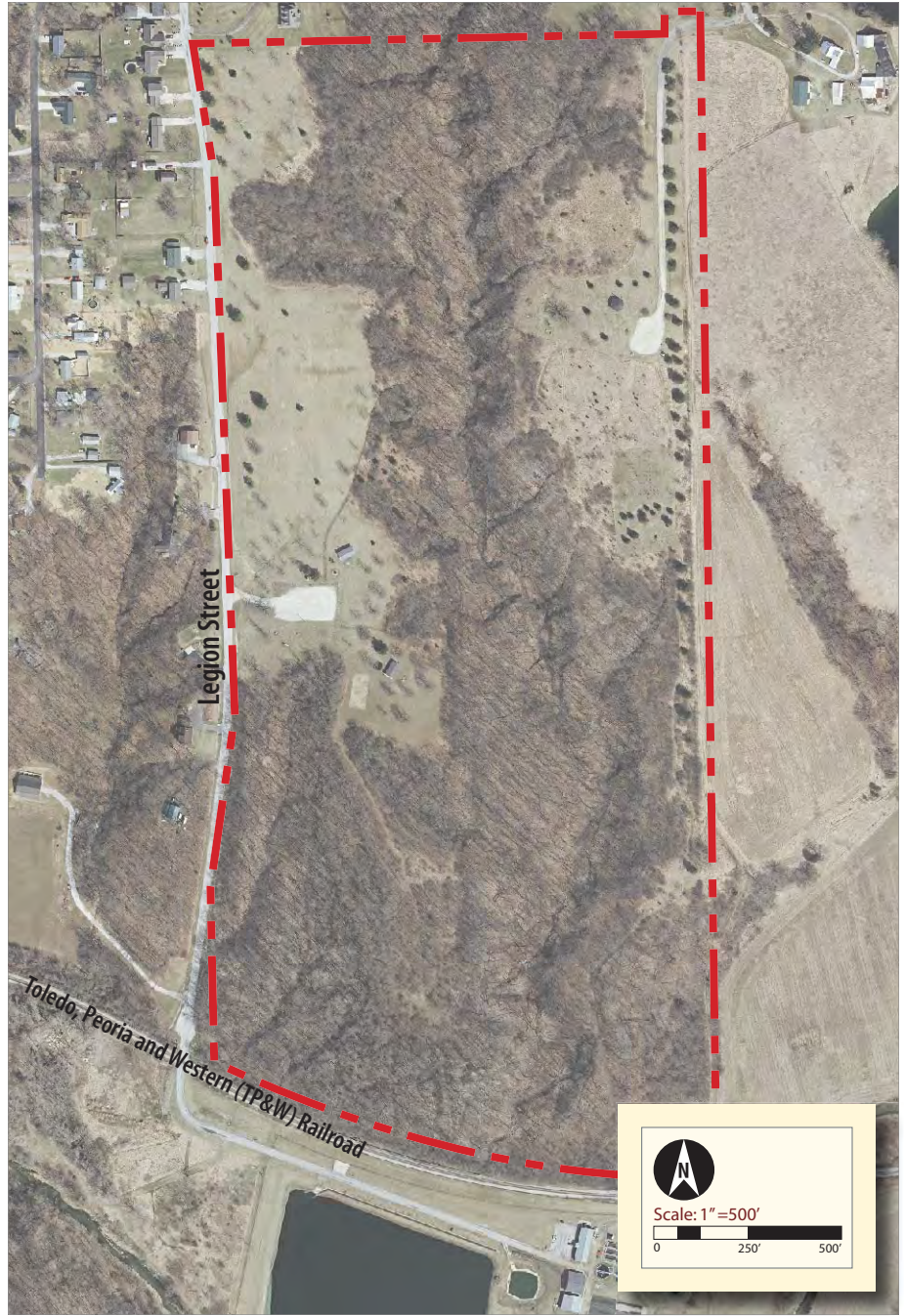
Park Identification Sign (West)



Trail and Wayfinding Signage



West Shelter with Picnic Tables



Aerial Photo of Meadow Valley Park



West Open Space and Mature Forestry

# Recreation Facility Park

located along Maple Street between Church Street and Spruce Street

Acres 1.40  
 Tax Number 02-02-24-112-006  
 Acquired information not available

## Observations

### Environmental

- The park is not located in a flood plain.
- No wetlands are present in this park.
- The park landscape is composed of turf and mature shade trees.
- Drainage issue exists at south playground outfall.

### Safety

- The playground appears to be compliant with current playground safety guidelines and CPSC/ASTM standards.
- The park's street frontage allows for adequate surveillance.
- A park identification sign and park rules sign are both absent.

### Site Design

- The park is across the street from the Park District Administration Building and Community Center.
- The park has an open area for non-programmed use.
- Site furniture that can be found throughout the park include 6 benches, and 1 trash receptacle.
- The playground has adequate separation from the roadway.
- The playground includes a 5-12 play structure, concrete edge separation, and engineered wood fiber play surfacing.
- A half basketball court with post and net is located next to the playground.
- The park has a small ballfield with a backstop and infield mix for use by younger age groups.

### Site Accessibility

- The park does not have any internal walkways, however the adjacent walkways are connected to the neighborhood walk system.
- The playground equipment appears to meet most ADA accessibility requirements for play environments, but does not have an accessible entry into the play surfacing. The path connection from the parking lot to the playground also exceeds accessibility slope requirements.

### Park Recommendations

- Install accessible ramp entry into play surfacing along the main walkway.
- Re-configure the path system to make a stronger, safer connection to the Administration Building.
- Repair parking lot.
- Address drainage/erosion issues around playground area.
- Improve barrier between parking lot and play environment.
- Consider picnic amenities like Bocce, Baggo, and Horseshoes with rentals managed in the Recreation Facility.

Quantity	Year Built	
		Trails-Multi-Use (miles)
		Trails-Bicycle (miles)
		Trails-Nature(miles)
		Shelter/Pavilion
		Restrooms
1		Play Equipment
		Swings
		Concessions
		Tennis
0.5		Basketball
		Volleyball
1		Baseball
		Softball
		Soccer
		Football
		Sledding
		Splash Pad
		Skating Rink
1		Parking Lot
34		Parking Spaces
		Picnic Tables
4		Park Benches
		Drinking Fountain
X		ADA Accessible

Utilities available:

ELE	WATER	STORM	SAN	GAS	TEL
-----	-------	-------	-----	-----	-----



5-12 Play Structure



Backstop and Ballfield



Half Basketball Court



Aerial Photo of Recreation Facility Park



5-12 Play Structure and Parking Lot

# Sweitzer Park

located along Hilldale Avenue adjacent to the TP&W Railroad

Acres 3.0  
 Tax Number 02-02-13-307-023  
 02-02-13-308-008  
 Acquired information not available

## Observations

### Environmental

- The park is located within the 100 year flood plain.
- No wetlands are present in this park.
- The park is adjacent to Farm Creek near the southwest corner that includes some invasive/native vegetation buffer with no access to the waterway.
- The park landscape is composed of turf and mature shade trees with a buffered forested area along the length of the adjacent railroad.

### Safety

- The playground does not appear to be compliant with current playground safety guidelines and CPSC/ASTM standards. Proper play surfacing is not utilized beneath swings and slide. The swings are not a recommended frame style.
- The park does not have security lighting.
- The park's street frontage allows for minimal surveillance.
- A park identification sign and shelter rental sign are present, however a park rules sign is absent.

### Site Design

- The park has open areas for non-programmed use.
- Site furniture that can be found throughout the park include 1 shelter, 1 trash receptacle, 2 picnic tables, 1 bench, and 1 grill.
- The park has a dedicated picnic area with picnic tables and a grill near the shelter.
- The playground has adequate separation from the roadway.
- The playground includes 2 belt/2 tot swings, no edge separation, and no play surfacing.
- Shelter rental sign is at an obtrusive height.
- The park is well maintained and free of litter.

### Site Accessibility

- The park does not have any internal walkways, however the adjacent walkway north of the park is connected to the neighborhood walk system.
- There is no off-street parking provided at the park.
- The playground equipment does not appear to meet ADA accessibility requirements for play environments.

### Park Recommendations

- Remove play equipment and replace with a small-scale play environment.
- Provide accessible route to picnic and play areas.
- Provide plant material to aid existing split-rail fencing to buffer residential edges.
- Thin understory vegetation along creek to provide visibility.
- Refine landscape accent at sign.
- Consider botanical garden features/theme with park development to accent tree collection.

Quantity	Year Built	
		Trails-Multi-Use (miles)
		Trails-Bicycle (miles)
		Trails-Nature(miles)
1		Shelter/Pavilion
		Restrooms
		Play Equipment
2		Swings
		Concessions
		Tennis
		Basketball
		Volleyball
		Baseball
		Softball
		Soccer
		Football
		Sledding
		Splash Pad
		Skating Rink
		Parking Lot
		Parking Spaces
2		Picnic Tables
1		Park Benches
		Drinking Fountain
		ADA Accessible

Utilities available:

ELE	WATER	STORM	SAN	GAS	TEL
-----	-------	-------	-----	-----	-----





Park Identification Sign



Swings (2 tot)



Swings (4 belt)



Aerial Photo of Sweitzer Park



Shelter with Picnic Tables, Signage, Open Space, and Bench