

Weaver Park

located off Lawndale Avenue adjacent to the TP&W Railroad

Acres 7.00
 Tax Number 02-02-13-309-016
 02-02-13-404-001
 Acquired 1969 - donated

Observations

Environmental

- The park is located within the 100 year flood plain.
- Wetlands are present in this park.
- The park includes a natural area with Farm Creek bisecting the property and mature vegetation.
- The park landscape is composed of turf and mature shade trees with a forested area and trails within. Intended community use of this park is passive.
- The area is lowland and likely inundated frequently.

Safety

- The park does not have security lighting.
- The park's street frontage does not allow for adequate surveillance.
- A park identification sign is present, however a park rules sign is absent.
- The TP&W Railroad is immediately adjacent to the park.

Site Design

- The park does not have open areas for non-programmed use.
- Site furniture that can be found throughout the park include 2 benches along the trail and 1 trash receptacle near the park entry.
- The initial portion of the pathway is paved, a mulch and grass trail system is located within the forested area.
- Wooden foot bridges, in moderate condition, help the trail cross multiple low points.

Site Accessibility

- The park does not have any internal walkways and is not connected to the neighborhood walk system.
- Portions of the trail are not easily navigated due to fallen tree trunks and branches present/blocking the trail route.
- There is no off-street parking provided at the park.

Park Recommendations

- Provide 2-3 parking spaces.
- Provide interpretive and wayfinding trail signs
- Selectively prune path system swath for improved security, maintenance, and wayfinding.
- Repair/replace footbridges.
- Enhance native ecosystem planting.
- Manage land with prescriptive burning, selective clearing, etc.
- Add habitat development features.

Quantity	Year Built	
		Trails-Multi-Use (miles)
		Trails-Bicycle (miles)
0.25		Trails-Nature(miles)
		Shelter/Pavilion
		Restrooms
		Play Equipment
		Swings
		Concessions
		Tennis
		Basketball
		Volleyball
		Baseball
		Softball
		Soccer
		Football
		Sledding
		Splash Pad
		Skating Rink
		Parking Lot
		Parking Spaces
		Picnic Tables
2		Park Benches
		Drinking Fountain
		ADA Accessible

Utilities available:

ELE	WATER	STORM	SAN	GAS	TEL
-----	-------	-------	-----	-----	-----



Park Identification Sign



Paved Trail and Bench



Water Access



Aerial Photo of Weaver Park



Mowed Pathway

Westgate Park/Washington Park District Pool

located at Westgate Road and Stratford Drive

Acres 5.00
 Tax Number 02-02-14-100-009
 02-02-14-100-010
 02-02-14-103-003
 Acquired 1972 - purchased / grant

Observations

Environmental

- The park is not located in a flood plain.
- No wetlands are present in this park.
- The park is adjacent to a drainage swale to the north.
- The park landscape is composed of turf and some mature shade trees. Additional ornamental plantings are located around the pool entrance.
- A large storm sewer device is located near the entry.

Safety

- The playground appears to be compliant with current playground safety guidelines and CPSC/ASTM standards.
- The park does not have security lighting.
- The park's street frontage allows for adequate surveillance.
- A park identification sign is present, however a park rules sign is absent.

Site Design

- The park has open areas for non-programmed use which also serves as overflow parking for the pool parking lot.
- Site furniture that can be found throughout the park include 1 shelter, 1 trash receptacle, and 2 picnic tables.
- The playground has adequate separation from the roadway.
- The playground includes a 5-12 play structure, 2 belt swings, concrete edge separation, and engineered wood fiber play surfacing.

Site Accessibility

- The park does not have any internal walkways, however adjacent walkways are connected to the neighborhood walk system.
- An off-street asphalt parking are with approximately 90 spaces is provided at the park.
- The playground equipment appears to meet ADA accessibility requirements for play environments.

Park Recommendations

- Install accessible ramp entry into play surfacing along the main walkway.
- Expanding parking lot north towards existing berm.
- The two existing lap pools are beyond their useful life, consider updating as necessary.
- Adjust finish grade around shelter perimeter
- The pool underwent a master plan process with published findings dated February 20, 2006. The findings primarily addressed pool mechanical and filtration considerations.
- Consider new trend amenities like lazy river, plunge pools, vortex pools, etc.

Quantity	Year Built	
		Trails-Multi-Use (miles)
		Trails-Bicycle (miles)
		Trails-Nature(miles)
1		Shelter/Pavilion
1		Restrooms
1		Play Equipment
1		Swings
1		Concessions
		Tennis
		Basketball
		Volleyball
		Baseball
		Softball
		Soccer
		Football
		Sledding
		Splash Pad
		Skating Rink
1		Parking Lot
90		Parking Spaces
2		Picnic Tables
		Park Benches
		Drinking Fountain
X		ADA Accessible
1		Swimming Pool

Utilities available:

ELE	WATER	STORM	SAN	GAS	TEL
-----	-------	-------	-----	-----	-----



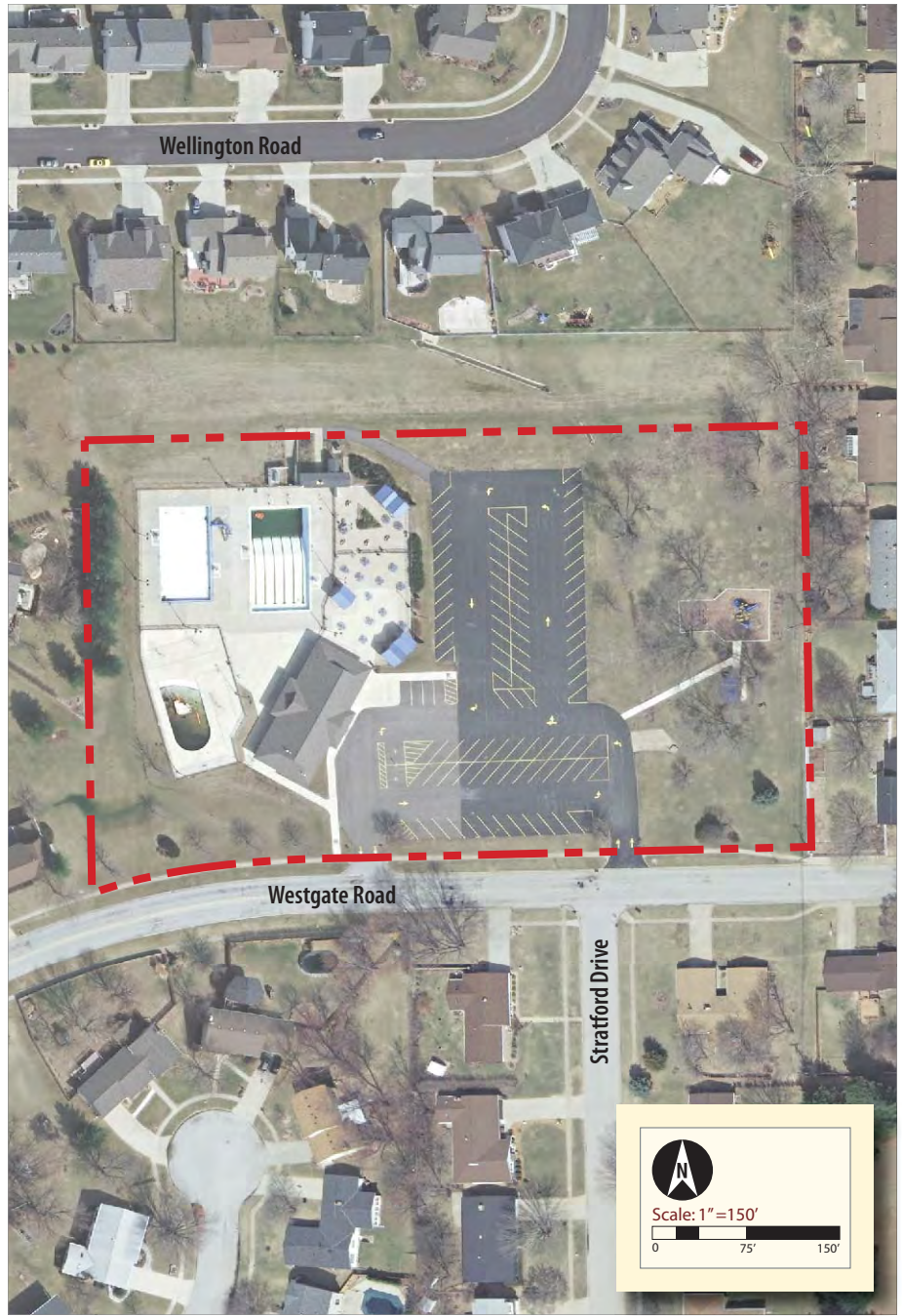
Park Identification Sign



Swings (2 belt) and 5-12 Year Old Play Structure



Shelter



Aerial Photo of Westgate Park



Pool

Oak Ridge Park

located at the end of Cummings Lane

Acres 59.00
 Tax Number 02-02-09-100-002
 02-02-04-200-002
 Acquired 1980- leased

Observations

Environmental

- The park is not located in a flood plain.
- No wetlands are present in this park.
- The park includes a drainage swale that collects water from the soccer fields and flows north.
- The park landscape is composed of turf and shade trees with a forested area to the north, east, and west.
- A single family residential area is located to the south.

Safety

- The playground appears to be compliant with current playground safety guidelines and CPSC/ASTM standards. Proper play surfacing is utilized beneath the playground structure, however there is no accessible path to the main site amenities.
- The park has minimal security lighting.
- The park's street frontage does not allow for surveillance, however vehicular access into the park allows for adequate surveillance.
- A park identification sign is present, however a park rules sign is absent.

Site Design

- The park has open areas for non-programmed use.
- Site furniture that can be found throughout the park include 1 shelter, 1 concessions building, 1 drinking fountain, benches, trash receptacles, and picnic tables.
- The playground has adequate separation from the roadway.
- The playground includes a 5-12 play structure, 4 belt/2 tot swings, plastic edge separation, and engineered wood fiber play surfacing.
- Other park amenities include 3 softball fields, 1 football field, and multiple soccer fields. All othree fields have new backstop and outfield fencing.
- The maintenance building is located near the entrance and is shared with the City of Washington and Township.

Site Accessibility

- The park does not have any internal walkways but is connected to city walkways at the south entrance.
- Off-street parking is provided at the park (primarily tar and chip with some asphalt paving areas).
- The playground equipment appears to meet most ADA accessibility requirements for play environments, but does not have an accessible entry into the play surfacing. There is also no path connection from the parking lot to the playground.

Park Recommendations

- Prepare new master plan focusing on: developing open space, new internal pathways and connection points, improving site accessibility, security lighting, and expanding / upgrading off-street parking.

Quantity	Year Built	
		Trails-Multi-Use (miles)
		Trails-Bicycle (miles)
		Trails-Nature(miles)
1		Shelter/Pavilion
X		Restrooms
1		Play Equipment
1		Swings
X		Concessions
		Tennis
		Basketball
		Volleyball
		Baseball
3		Softball
7		Soccer
1		Football
		Sledding
		Splash Pad
		Skating Rink
3		Parking Lot
400		Parking Spaces
14		Picnic Tables
		Park Benches
1		Drinking Fountain
		ADA Accessible
		Swimming Pool

Utilities available:

ELE	WATER	STORM	SAN	GAS	TEL
-----	-------	-------	-----	-----	-----



Concessions Building



5-12 Play Structure and Swings (4 belt/2 tot)



Softball Field and Backstop



Aerial Photo of Oak Ridge Park



Soccer Fields

Washington Park

located north and south of Lincoln Street

Acres 60.00
 Tax Number 02-02-14-400-001
 Acquired 1968 - purchased

Observations

Environmental

- The park is located within the 100 year flood plain.
- No wetlands are present in this park.
- A creek/swale with native planting bisects the park. Multiple bridges are located along the creek to allow access across.
- The park landscape is composed of turf and mature shade trees with a forested area to the west and heavily rolling topography.
- An ornamental garden is located near the west park area.

Safety

- The playground appears to be compliant with current playground safety guidelines and CPSC/ASTM standards. Proper play surfacing is utilized beneath the playground structure. The swings are not a recommended frame style.
- The park has minimal security lighting.
- The park's street frontage allows for adequate surveillance.
- A park identification sign is present, however a park rules sign is absent.

Site Design

- The park has open areas for non-programmed use.
- Site furniture that can be found throughout the park include 2 shelters, 1 shelter/restroom facility, 1 newer concessions/restroom building, 1 drinking fountain, multiple benches and spectator bleachers, trash receptacles, picnic tables, and grills.
- The playground has adequate separation from the roadway.
- The playground includes a 5-12 play structure, 6 belt/2 tot swings, concrete edge separation, and engineered wood fiber play surfacing with space to expand the playground structure in the future.
- Other park amenities include 2 lit softball fields, batting cages, 3 tennis courts, 1 sand volleyball court, 2 basketball posts and nets within north parking area (adjacent to softball fields), 2 shuffleboard courts, and an 18-hole disc golf course.
- A Veteran's Memorial is centrally located within the park along Lincoln Street with a helicopter as the main sculptural element and adjacent memorial donor pavers.

Site Accessibility

- The park has internal walkways and is connected to the neighborhood walk system.
- Off-street parking is provided at the park. The parking lot east of Lincoln Street is asphalt paving and can accommodate approximately 135 cars. The two parking lots west of Lincoln Street are gravel paving and can accommodate approximately 40 cars each.
- The playground equipment appears to meet most ADA accessibility requirements for play environments, but does not have an accessible entry into the play surfacing. There is also no path connection from the parking lot to the playground.

Park Recommendations

- Incorporate edging along the existing sand volleyball court to contain the sand. Extend sand area a minimum of 10' for fall protection.
- Improve parking edge/paving conditions.
- Repair shelter concrete perimeter condition.
- Provide accessible routes to all shelters and amenities.
- Provide accessible ramp into play environment.
- Add landscape layering at memorial area.

Quantity	Year Built	
1.22		Trails-Multi-Use (miles)
		Trails-Bicycle (miles)
		Trails-Nature(miles)
3		Shelter/Pavilion
X		Restrooms
1		Play Equipment
2		Swings
X		Concessions
3		Tennis
2		Basketball
1		Volleyball
		Baseball
2		Softball
		Soccer
		Football
		Sledding
		Splash Pad
		Skating Rink
3		Parking Lot
215		Parking Spaces
34		Picnic Tables
10		Park Benches
1		Drinking Fountain
		ADA Accessible
18		Disc Golf
2		Shuffleboard

- Omit basketball standard in parking lot.
- Consider lighting update.
- Replace bleachers.
- Provide accessible connections to each field from parking area.
- Provide gathering space/walkways/core area in between softball fields.
- Upgrade turf management practices.
- Refine parking lot edges.
- Strengthen picnic amenities.

Utilities available:

ELE	WATER	STORM	SAN	GAS	TEL
-----	-------	-------	-----	-----	-----



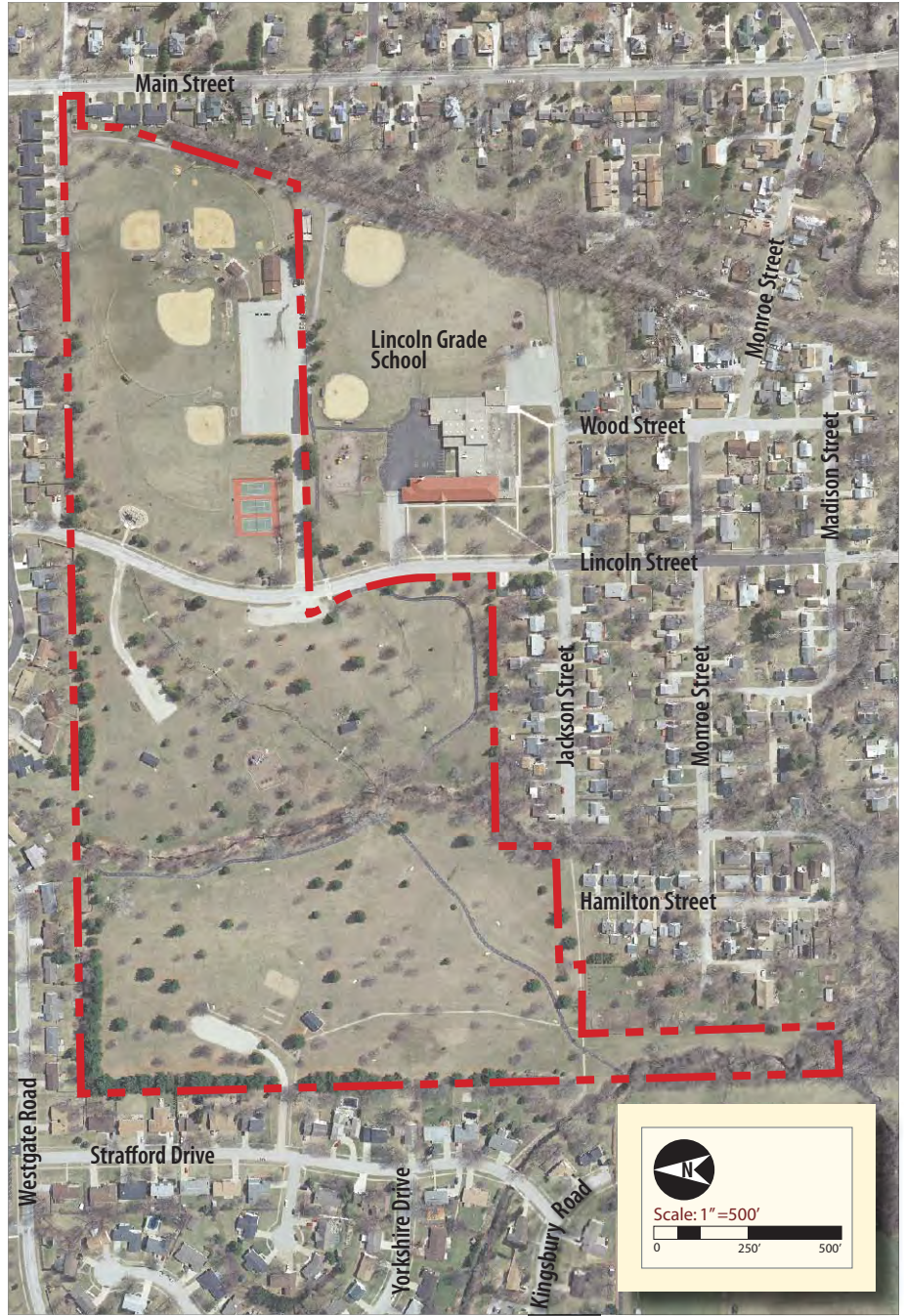
Park Identification Sign and Memorial Stone



Backstop with Press Box and Spectator Area



5-12 Play Structure



Aerial Photo of Washington Park



Disc Golf, Open Space, Internal Pathway, and Bench

Bowen Lake Park

located off of North Main Street

Acres 13.80
 Tax Number 02-02-11-200-005
 Acquired 1992 - purchased / dedication

Observations

Environmental

- The park is not located in a flood plain.
- No wetlands are present in this park.
- The park includes a lake with native plantings stabilizing the lake edge.
- The park landscape is composed of turf and shade trees with farmland adjacent on all sides.
- The lake was created as a borrow pit for the completion of the Route 24 bypass.
- A native vegetation buffer was attempted, however invasive vegetation has been introduced into the site and is interfering with views into the water from the adjacent trail system.

Safety

- The park's street frontage allows for adequate surveillance.
- A park identification sign is present, however a park rules sign is absent.
- The fishing pier does not comply with regulations. One concrete pier footing has shifted due to freeze/thaw.

Site Design

- The park has open areas for non-programmed use.
- Site furniture that can be found throughout the park include 1 shelter, benches, trash receptacles, and picnic tables.
- A rental rules and regulations sign is present at the shelter.
- The playground has adequate separation from the roadway.
- The playground includes 1 belt/1 tot swings, no edge separation, and no play surfacing.
- The lake has a fishing pier and a boat launch for access to the water. Various signs are present along the loop trail and near the fishing pier displaying boating and fishing regulations.
- An aggregate loop trail system is located around the lake with multiple seating areas.
- A dedication memorial to Tom Boyd and his efforts to get the north bypass built is located along the trail system.

Site Accessibility

- The park has internal walkways but due to the location of the site and adjacent land uses, there is no connection to the neighborhood walk system. The existing walkway is deteriorating.
- Small foot bridges provide access across swales and are beginning to show wear.
- An off-street gravel parking area is provided that can accommodate approximately 40 cars.
- The playground equipment does not appear to meet ADA accessibility requirements for play environments.

Park Recommendations

- Restore accessibility to the loop trail.
- Repair/replace fishing dock.
- Stabilize shoreline at boat access ramp.
- Repair/replace footbridges.
- Replace benches along loop trail
- Remove existing swings and replace with fish themed play environment.
- Improve parking edge/paving.
- Manage land with prescriptive burning, selective clearing, etc.
- Provide 5-6 fishing stations with access around the pond including habitat development sub-surface.

Quantity	Year Built	
0.5		Trails-Multi-Use (miles)
		Trails-Bicycle (miles)
		Trails-Nature(miles)
1		Shelter/Pavilion
X		Restrooms
		Play Equipment
1		Swings
		Concessions
		Tennis
		Basketball
		Volleyball
		Baseball
		Softball
		Soccer
		Football
		Sledding
		Splash Pad
		Skating Rink
1		Parking Lot
40		Parking Spaces
6		Picnic Tables
8		Park Benches
		Drinking Fountain
		ADA Accessible
1		Fishing Pier
1		Boat Ramp

Utilities available:

ELE	WATER	STORM	SAN	GAS	TEL
-----	-------	-------	-----	-----	-----



Park Identification Sign



Picnic Area with Swings (1 belt/1 tot)



Bench and Loop Trail



Aerial Photo of Bowen Lake Park



Fishing Pier

Gully Park

located between McGinley Street and Peach Street

Acres 2.5
 Tax Number 02-02-11-200-005
 Acquired 1992 - purchased / dedication

Observations

Environmental

- The park is not located in a flood plain.
- No wetlands are present in this park.
- The park consists of a wooded ravine behind residential housing.

Safety

- The park is remote without safety measures or good surveillance opportunities.
- A park identification sign is not present

Site Design

- No features currently exist

Site Accessibility

- No access is currently provided.

Park Recommendations

- Negotiate access agreement with adjacent land owners.
- Consider trail head establishment and trail access through the site.
- Consider management of natural ecosystems through selective clearing.

Quantity	Year Built	
		Trails-Multi-Use (miles)
		Trails-Bicycle (miles)
		Trails-Nature(miles)
		Shelter/Pavilion
		Restrooms
		Play Equipment
		Swings
		Concessions
		Tennis
		Basketball
		Volleyball
		Baseball
		Softball
		Soccer
		Football
		Sledding
		Splash Pad
		Skating Rink
		Parking Lot
		Parking Spaces
		Picnic Tables
		Park Benches
		Drinking Fountain
		ADA Accessible
		Fishing Pier
		Boat Ramp

Utilities available:

ELE	WATER	STORM	SAN	GAS	TEL
-----	-------	-------	-----	-----	-----



Access point



Representative Character



Park Edge



Aerial Photo of Gully Park



Park Edge

Future Park

located along Legion Street

Acres 8.00
 Tax Number 02-02-14-110-011
 Acquired information not available

Observations

Environmental

- The park is not located in a flood plain.
- No wetlands are present in this park, however a detention basin was created as part of the subdivision.
- A large majority of the park is a detention area for the adjacent neighborhood.
- The park landscape is composed of native plantings, turf and shade trees.

Safety

- The park does not have security lighting.
- The park's lack of street frontage does not allow for adequate surveillance.
- A park identification sign is not present.

Site Design

- The park has open areas for non-programmed use.

Site Accessibility

- The park does not have any internal walkways and is not connected to the neighborhood walk system.
- There is no off-street parking provided at the park.
- Access into park is through 15' easement between two residential houses off of Coventry Drive.

Park Recommendations

- Selectively clear and thin native prairie landscape within detention.
- Consider loop trail system around outer portions/higher elevations of site with fitness stations spaced evenly along the trail.
- Provide access from the street.
- Consider play trail components.
- Consider sale/trade of land.

Quantity	Year Built	
		Trails-Multi-Use (miles)
		Trails-Bicycle (miles)
		Trails-Nature(miles)
		Shelter/Pavilion
		Restrooms
		Play Equipment
		Swings
		Concessions
		Tennis
		Basketball
		Volleyball
		Baseball
		Softball
		Soccer
		Football
		Sledding
		Splash Pad
		Skating Rink
		Parking Lot
		Parking Spaces
		Picnic Tables
		Park Benches
		Drinking Fountain
		ADA Accessible

Utilities available:

ELE	WATER	STORM	SAN	GAS	TEL
-----	-------	-------	-----	-----	-----



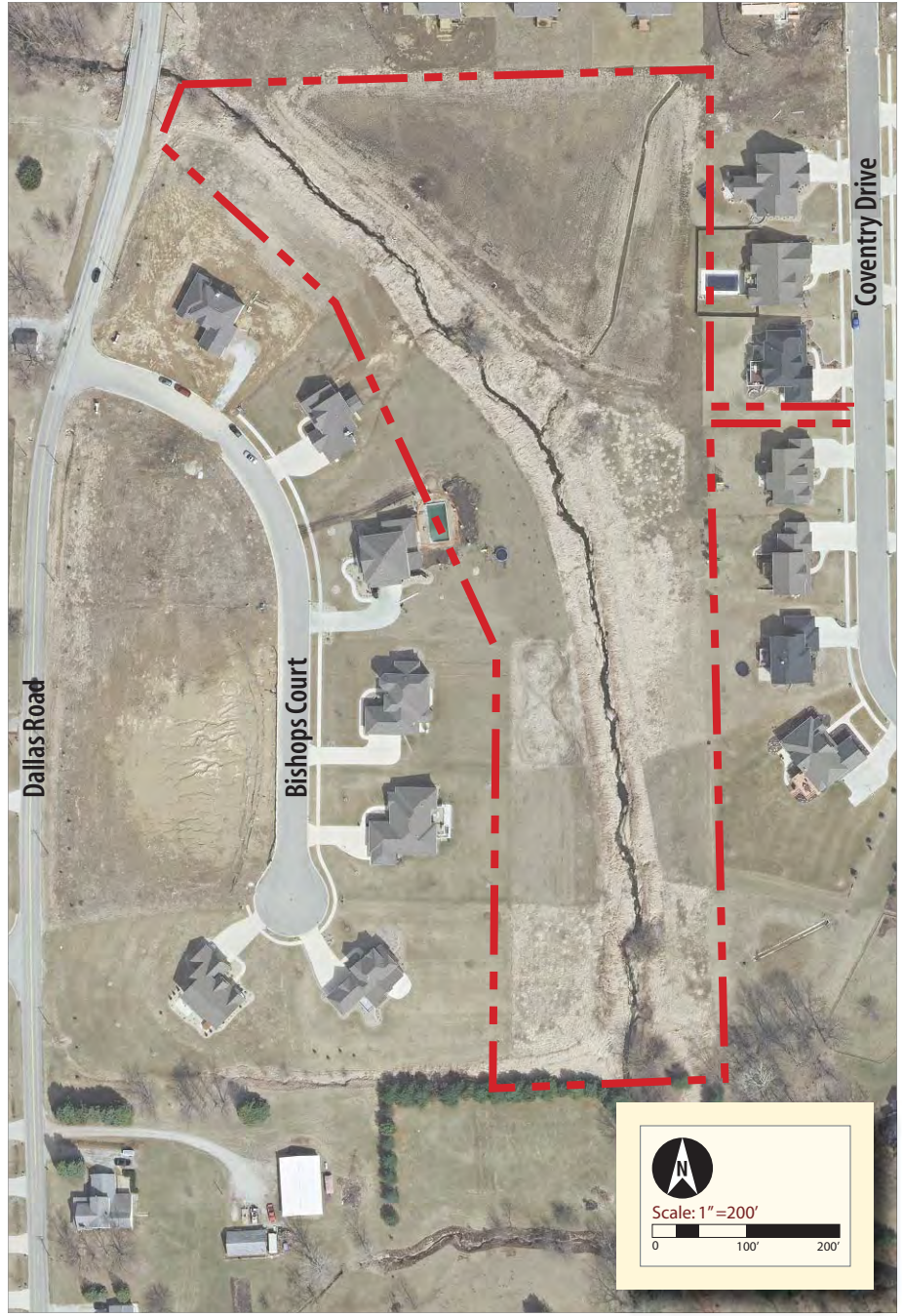
Park Access at 15' Easement



Detention Area with Concrete Channel



Open Space



Aerial Photo of Future Park



Open Space

Recreation Facility

105 South Spruce Street

Acres 13.80
 Tax Number 02-02-11-200-005
 Acquired 1992 - purchased / dedication

Observations

Environmental

- The park is not located in a flood plain.
- No wetlands are present in this park.
- The property houses the recreation facility and has very little green space.

Site Design

- The majority of the site is encompassed by the building.
- Crosswalks/ramps and improved wayfinding could improve the entry experience.
- Minimal buffer exists between facility and adjacent residential properties.

Site Accessibility

- An ADA Audit was performed as part of the 2005 Master Plan process and a checklist for improvements was prepared.
- Site improvements dealt with ramps and sidewalk slopes primarily.

Park Recommendations

- Recommendations are provided in a separate master plan for the building facility prepared by Burnidge Cassel Associates in 2005.
- Key site recommendations include the development of a play environment and landscape improvements.

Building Recommendations

- Undertake a site feasibility study to validate the value of rehabilitation versus new construction.
- Implement a master plan priorities study including the following confirmations from this process:
 - Add/expand indoor gymnasium/basketball court space.
 - Improve restrooms.
 - Expand tumbling space.
 - Re-purpose stage area.
 - Add kitchenette.
 - Add a pool table/gaming area.
 - Enhance access to indoor batting cages.

Quantity	Year Built	
		Trails-Multi-Use (miles)
		Trails-Bicycle (miles)
		Trails-Nature(miles)
		Shelter/Pavilion
		Restrooms
		Play Equipment
		Swings
		Concessions
		Tennis
		Basketball
		Volleyball
		Baseball
		Softball
		Soccer
		Football
		Sledding
		Splash Pad
		Skating Rink
		Parking Lot
		Parking Spaces
		Picnic Tables
		Park Benches
		Drinking Fountain
		ADA Accessible
		Fishing Pier
		Boat Ramp

Utilities available:

ELE	WATER	STORM	SAN	GAS	TEL
-----	-------	-------	-----	-----	-----



Accessible Southwest Entry



East Side Parking Area



Entrance to Park District



Aerial Photo of Recreation Center



Spruce Street Facade

